

MAIN EVENT AUCTIONS

Proudly presents the Wendall Opdahl Estate Farm Auction!

ANOTHER MAIN EVENT LIVE and ONSITE - IN PERSON AUCTION!

Saturday, June 8, 2024 at 10 am

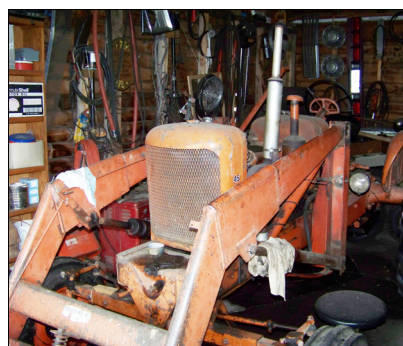
Location: 29082 350th Ave SE, Trail, MN 566084

About 40 mi South and a little East of Thief River Falls, MN ~ About 60 mi NW of Bemidji, MN ~ About 65 mi East of East Grand Forks, MN ~ From Fosston, MN go North on Polk Cty #6 12 mi. ~ From Trail, MN West on US #92 past the gravel pit to Polk Cty #6, then left (South) 2 1/2 mi to site on the left. ~ From Brooks, MN on US Hwy #59, go East on US #92 about 18 mi. to Polk Cty #6 (a paved road), turn right (South) 2 1/2 mi.

**NO RESERVE PRICES! EVERYTHING WILL SELL TO THE HIGHEST BIDDER REGARDLESS OF PRICE!
NO BUYERS PREMIUM! THIS SALE WILL ALSO INCLUDE TRACTORS, SMALL IMPLEMENTS, TOOLS, AND
ANTIQUE FARM TOOLS FROM THE REV. GORDON SYVERSON ESTATE AS WELL!**

SCRAP IRON- there won't be much, the scrap iron is already spoken for. The descriptions contained here are only a tiny sample of what's there.

Check our website for hundreds of pictures! www.maineventauctions.com



Allis WD 45 tractor like new rubber, wide frnt, wheel weights AC 2 point 540 pto Paulson loader w/trip bucket



1929 HART PARR mod 12-24 original to the farmstead like new paint & Rubber, might need injector work, another injector available. Wide frnt, ser # 42153



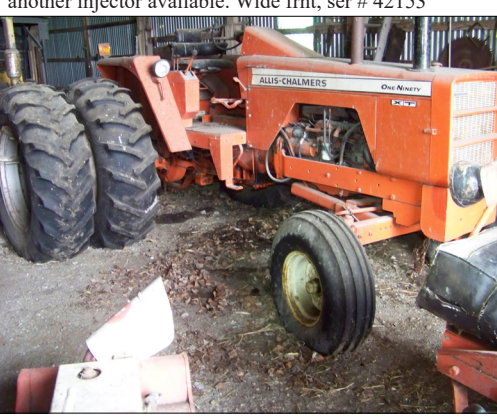
B Allis w/ 6' belly mnt sickle mower wide frnt, wheel weights, nice rubber elec start, runs!



1937 B John Deere unstyled ser # 32654 Spoke wheels wide frnt runs!



B Allis nice paint rear circle saw, 6' belly mower wide frnt



Allis 190XT all dualled up nice shape, wide frnt diesel, open station, starts but may need injector pump work, Jobber 3 pt, 6556 hours, dual hyd 540 PTO rated 100 hp



WC Allis nrw frnt, live hyd's, whl wghts, 540 PTO, Elec start, belt pulley, decent rubber



IH TD 9 Industrial crawler/dozer, 1951 mode, non running, Hyd 2 way blade, Diesel, 60% running gear, ser # TDCB41625



Allis D-19 TURBO Diesel A landmark amongst Tractors! This was the first Tractor Model to offer factory turbo! This one runs gr8 and is in real nice condition with only 1700 hrs, live hd dual hyd, wide frnt, rated 90 hp



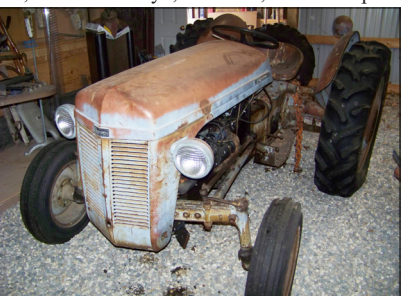
BARN FIND! Hidden in a metal building with the doors sunk into the earth we found this stunning example of American Iron! A 1975 Chevrolet 10- 1/2 ton Scottsdale edition about the straightest example you'll ever find up in this country. 2 wheel dr Fires right up! Only reads 87k miles and I believe that to be accurate. 350 V8 automatic



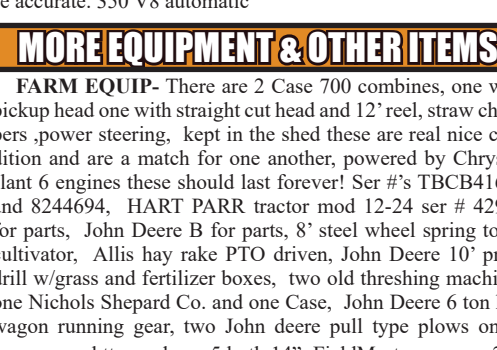
Ford 9N Hi/Lo range 3 point Flat head motor 12 v 3 pt



IH M late model narrow frnt pipe loader trip bucket belly pump good rubber gas eng



1949 Ferguson TO20 USA made Tractor wide frnt 3pt like new rubber, flathead ser # 9093



MORE EQUIPMENT & OTHER ITEMS

FARM EQUIP- There are 2 Case 700 combines, one with pickup head one with straight cut head and 12' reel, straw choppers, power steering, kept in the shed these are real nice condition and are a match for one another, powered by Chrysler slant 6 engines these should last forever! Ser #'s TBCB41625 and 8244694, HART PARR tractor mod 12-24 ser # 42957 for parts, John Deere B for parts, 8' steel wheel spring tooth cultivator, Allis hay rake PTO driven, John Deere 10' press drill w/grass and fertilizer boxes, two old threshing machines one Nichols Shepard Co. and one Case, John Deere 6 ton hay wagon running gear, two John deere pull type plows onr 4 bttm and one 5 both 14", FieldMaster approx. 2 or 3 yard scraper, An assortment of grain augers on transports, John Deere 16' field cultivator, 4 bottom Allis disc plow w/ 26" disc's 2 point hitch, log loader bucket for Allis and asst tin from a grain bin, John Deere 14' disc w/ hyd, 10' Case header and corral gate, tons of Allis Chalmers parts! Ford 3

This Great sale marketed & conducted by:

MAIN EVENT AUCTIONS

Darin Lee, Professional Auctioneer

MN Lic. # 15-11 and Real Estate Broker for Northern Places Realty, LLC (218) 358-1168
13520 Beaver Lodge Lane NW, Bemidji, MN 56601

point back blade, horse drawn corn planter, a few few fresnos and dirt slips, small single row cultivator, rear mount snow blower for tractor, horse drawn potato planter, two bottom plow

SPORTING- FIREARMS- There are a few Good quality hunting and plinking type guns for sale, Remington semi auto .22 rifle, Old Winchester .22 bolt action, Remington 742 semi auto .308, Remington 760 pump 6mm, 14' ALUMINUM FISHING BOAT AND TRAILER

SAWMILL Sawmill on trailer 40" insertible tooth blade under a roof, -power unit for sawmill small block chevy V8 and 3 speed
TRUCKS VEHICLES TRAILERS- 1954 Chevrolet 6400 gas eng truck w/ steel 12' grain box nice shape shedded, 1960 Chevy Belair cab good frnt and rear glass, 1948 Ford F500 Truck grain box steel bed flat head v8, 1960 Chevy Belair cab good frnt and rear glass, 1996 Buick LeSabre 186k mi non running, 2 Home built 2 wheel tilt bed trlrs

GAS HIT and MISS engines John Deere hit and miss gas engine all painted up on steel cart Waterloo type E 1/2 hp engine, McCormick Deering Hammer mill for grain, IH C hit and miss Type LB 11/2 to 2 1/2 hp w/water pump and steel cart, many hit and miss engines of all conditions and brands, Fairbanks Morse water pump? On steel wheels

MISC- Woods RM372 finish mower 3 point mnt, Old Smithway Art Deco style gas pump 1950's, Shop Built wood splitter, pair of combine tires 14.9X26, elec cement mixer, Letz belt driven feed mill, pair of 15' x 4" I beams, McCormick Deering feed grinder, numerous smaller chainsaws some collectible, Johnson 6 hp outboard, Coleman Powermate 2500 watt

generator, Craftsman LT1000 riding mowe, r MINI BIKE Gemini BOSS 80cc 1361 mi, Frontier ST1028 snowblower

SHOP EQUIP- Hyd Press, engine stand, a number of bench grinders and other shop tools, Many antique wrenches, collection of hood ornaments and emblems, Black & Decker metal cutoff saw, Valve grinding machine and many accouterments, Valve dressing stand, Craftsman 15 1/2" Heavy Duty drill press, approx 100 lb Blacksmith anvil, Wards 5A Alligator metal shear very heavy duty, Owned Oxy/Acetylene rig not rented, rolling shop air compressor, double tank jobsite compressor, Huge asst of hand mechanic and shop tools many trusted old brands that are 50 to 70 years old.

WOODWORKING- Craftsman 12" Planer, Craftsman contractor series wood shaper, Older Rockwell wood joiner, Wards 12" floor mnt band saw/sander, Craftsman table saw, AMT mod 5171 1hp 12 spd radial arm drill press, Several dual sanders, Ryobi 12" planer, Craftsman 10" radial arm saw, Duro scroll saw, Rockwell wood lathe, WEN 10" sliding compound saw mod 70711, TOP TOOLS Variable speed bandsaw, Foley Belsaw Planer/Molder 12 3/8ths" x 6 1/4", CAL-HAWK Dual sander, vintage DELTA wood joiner, Foley- Belsaw dust collector vac

COLLECTIBLES- Many Rollag collector plates, Hand well pump, hand crank corn sheller, rope maker, Parking meter, many corn planters and lots of other vintage farm tools and primitives, grass scythes' hay knives and blacksmith drill press, early jacks and lanterns, shoe lasts, 3 old time plunger style clothes washers, fruit press

Terms: cash or your good check. All items must be paid for immediately after the auction is over or before. Auction Co. and its crew are not responsible for accidents, errors or omissions and honest mistakes. All items are to be removed from the auction site the day of the auction unless other agreements have been made with Auction Co. or seller. Statements made by Auctioneer on sale day have precedence over all previous statements. All items sold as/is where is with no guarantees or warranties expressed or implied. All titles and their status are the responsibility of the seller. The Auction Co. is only acting as an agent for the seller and is not responsible for any statements acts or guarantees expressed or implied by anyone else including the seller.